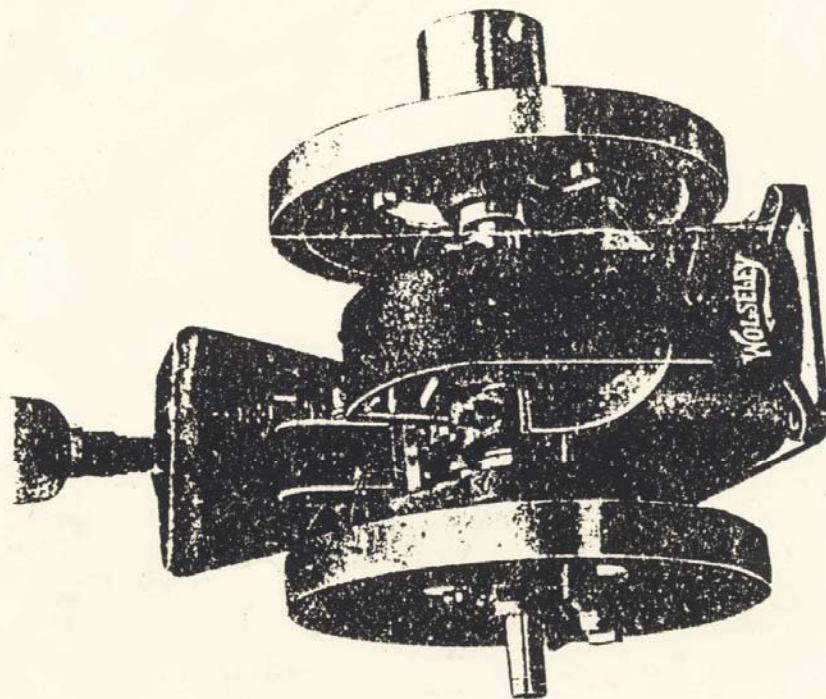


WOLSELEY

3 H.P. Petrol-Paraffin Engine
(HOPPER COOLED)



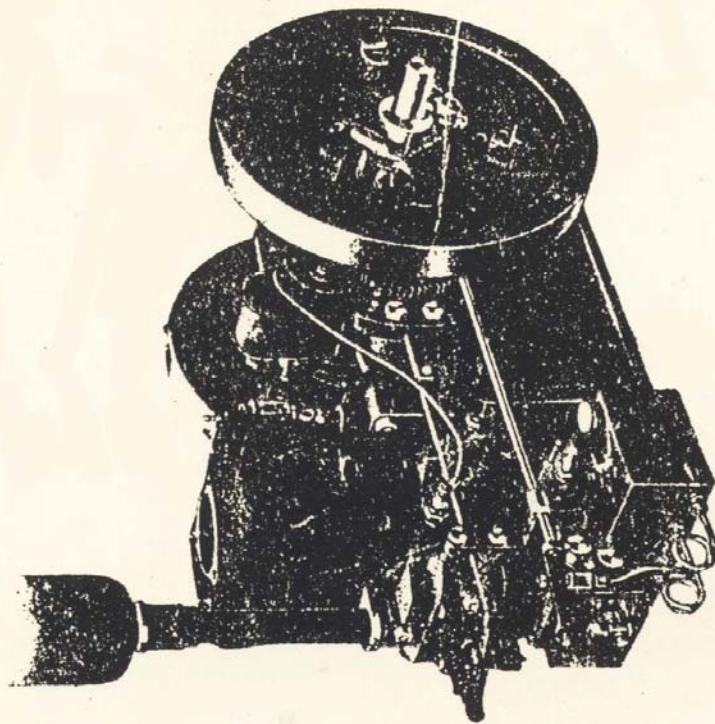
SIMPLE

--- ECONOMICAL

EFFICIENT

WOLSELEY

3 H.P. PETROL-PARAFFIN ENGINE



WORKING INSTRUCTIONS.

SPARE PARTS.

— SOLE MAKERS —

THE WOLSELEY SHEEP SHEARING MACHINE CO., LTD.,
ALMA STREET,
SYDNEY WORKS.

TELEPHONES: Northern 900 & 901
GRAMS: "Shearing, Birmingham."
BIRMINGHAM.

CODES: A.B.C. 3th Editions, Leibers, Bentleys, Marconi Vol. 1.

2256

WORKING INSTRUCTIONS.

Our 3 H.P. Horizontal Engine has been introduced to meet the requirements of those who require a little power and where space is limited. The "WOLSELEY" Engine is substantially built and made throughout of the best materials thereby ensuring long life and perfect satisfaction. All engines are thoroughly tested and will give the same general efficiency as our Vertical Engines.

We request all users to carefully follow the instructions and by so doing they will realise how simple our engines are.

On the following pages will be found complete list of parts and illustrations. When ordering spares always quote Engine No., and description of part and part number as this will ensure the correct part being sent.

BEFORE STARTING ENGINE.

Fill Petrol and Paraffin Tanks.

Fill Water Hopper nearly full. In cold weather, engine will start much better if ~~warm~~ water is used.

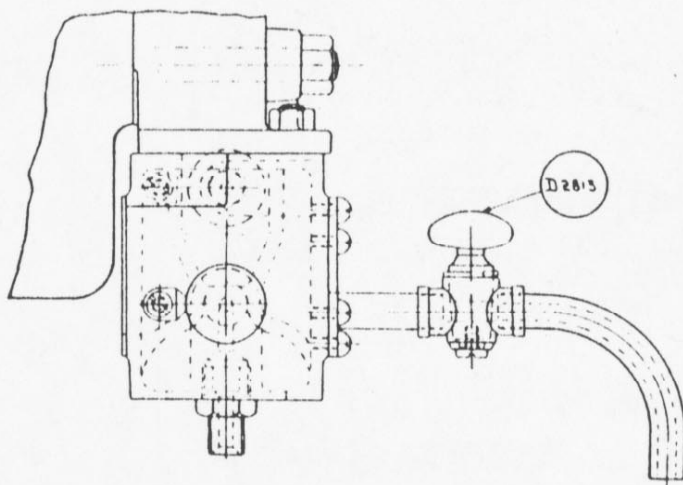
Oil Governor and all working parts.

Fill Piston Lubricator and adjust to feed about 10 drops per minute.

See that there is sufficient oil in main bearing oil well.

Fill Grease Cup on Connecting Rod, and screw down cap until grease is forced into bearing.

TO START ENGINE.



Turn on Petrol Valve (which is on the left hand side of Carburettor) to the letter "S," put starting handle on Crank shaft and give a few sharp turns until engine fires. Should any difficulty be experienced in starting, and a richer mixture is required, cover up inlet port at bottom of carburettor with left hand, and turn sharply with the right.

TO STOP ENGINE.

Turn off Petrol or Paraffin valve, whichever may be in use.

**3 H.P.
PETROL-PARAFFIN**

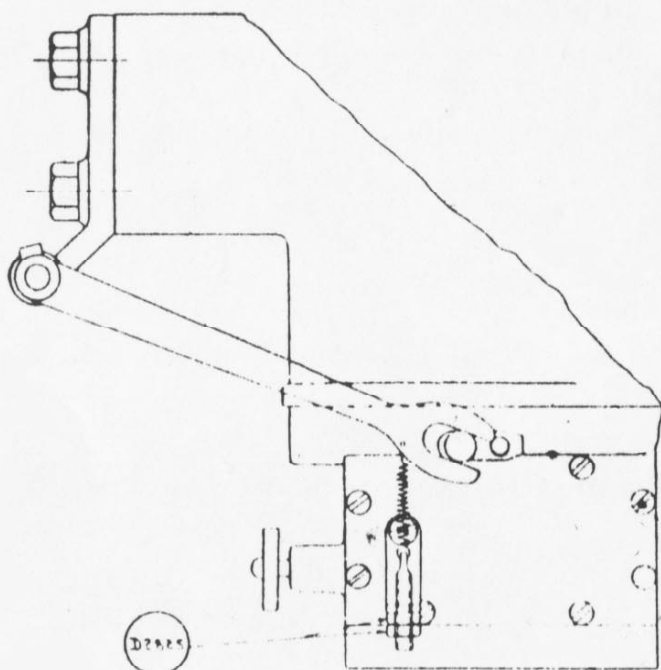
WOLSELEY

**HORIZONTAL
ENGINES.**

RUNNING ON PETROL.

To run engine on load requires less petrol than to start, therefore after starting turn valve back to the letter "W" or in other words close valve slightly.

TO CHANGE OVER FROM PETROL TO PARAFFIN.



Open exhaust by-pass D2813 to allow the hot gasses to heat the carburettor. After the engine has run a few minutes on petrol with a reasonable load and the carburettor is sufficiently hot, open the Paraffin valve gradually and allow a little paraffin to mix with the ingoing charge of petrol. Then shut the Petrol valve gradually and open paraffin valve to the letter "W." Should the engine be required to run on a light load it will require a little less paraffin, therefore, close the valve slightly

Should engine knock when running on load, open the valve slightly until the knocking ceases.

GOVERNOR.

To increase speed of engine put more tension on auxilliary spring by screwing up nuts D2825, to decrease speed unscrew nuts D2825.

If the required speed is not within the range of this spring, adjust the governor weight springs, to increase speed evenly screw up the 4 nuts D2774, to decrease speed unscrew nuts D2774, these should be kept as even as possible. Be sure when required speed is obtained to lock the adjusting nuts securely.

